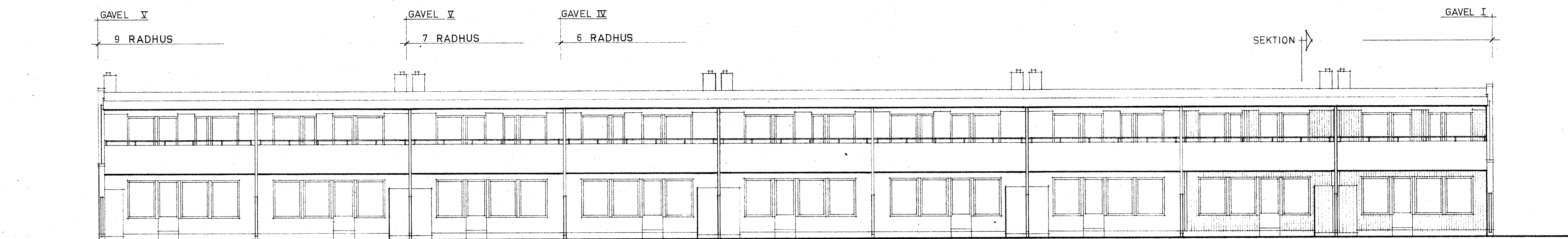
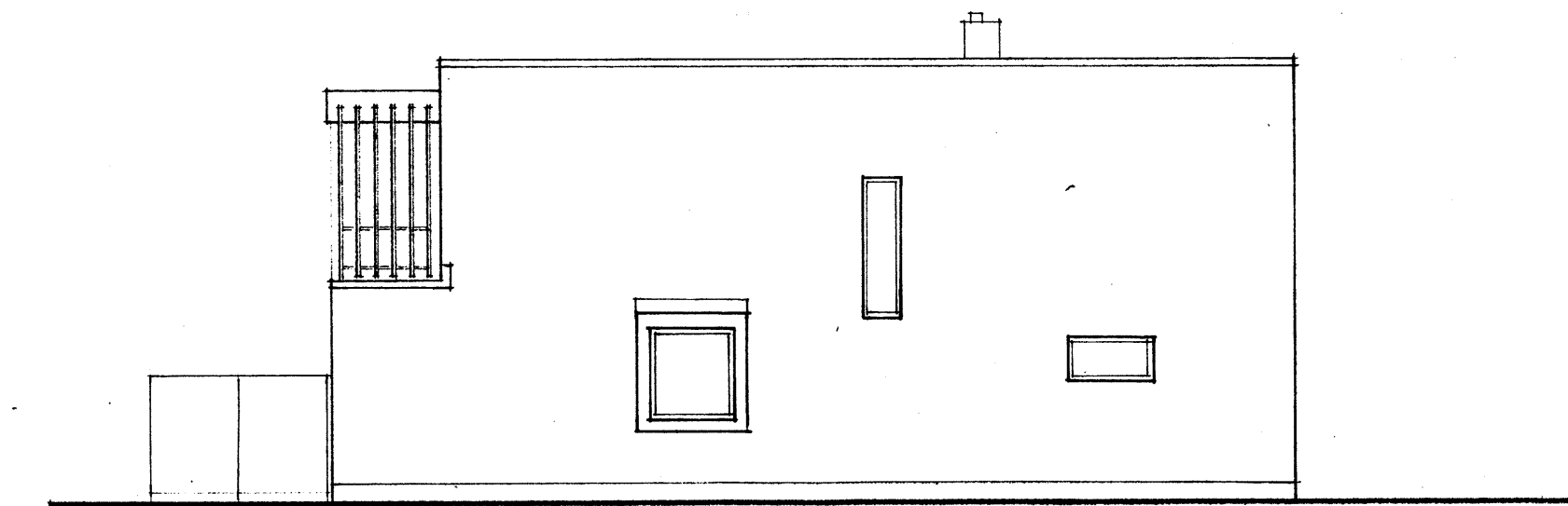


FASAD MOT GATA

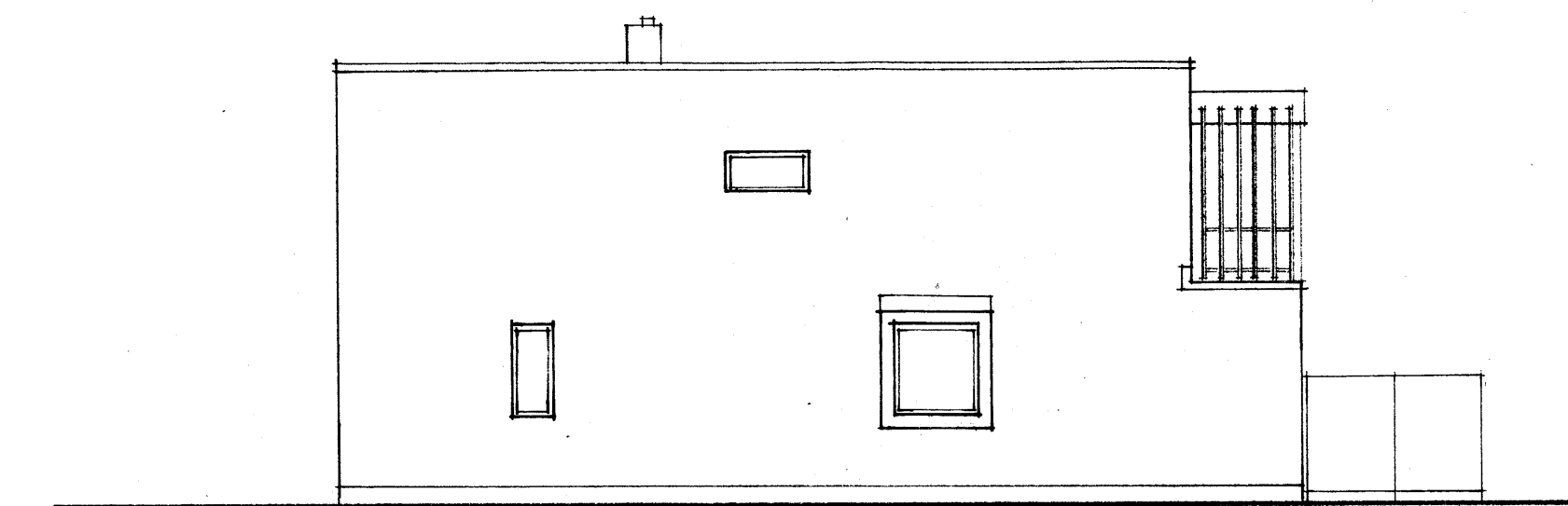


FASAD MOT GÅRD

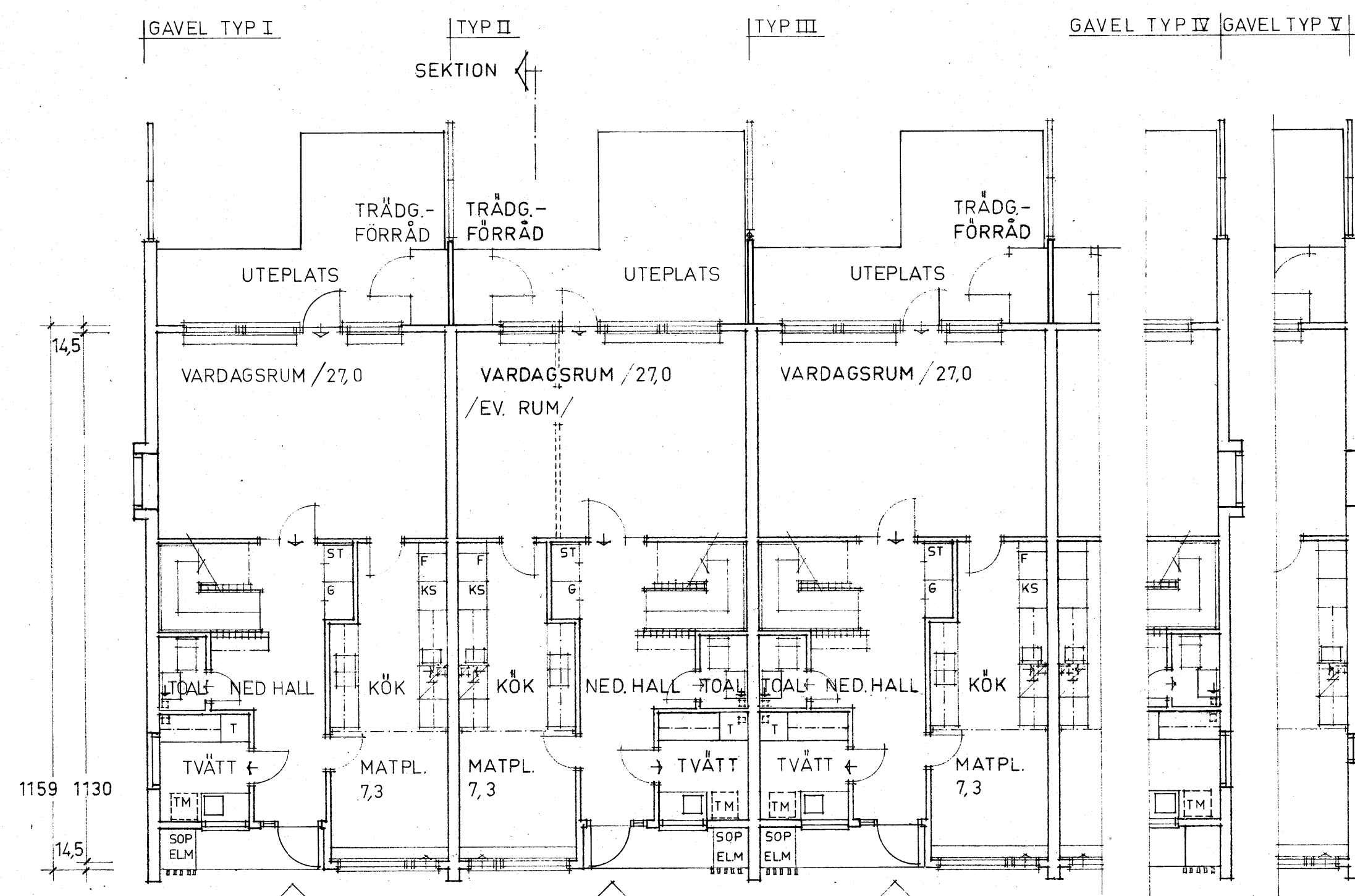
STUPRÖR, GALLER VID 6 RADHUS



GAVELFASAD I/OCH IV SPEGELVÅND/

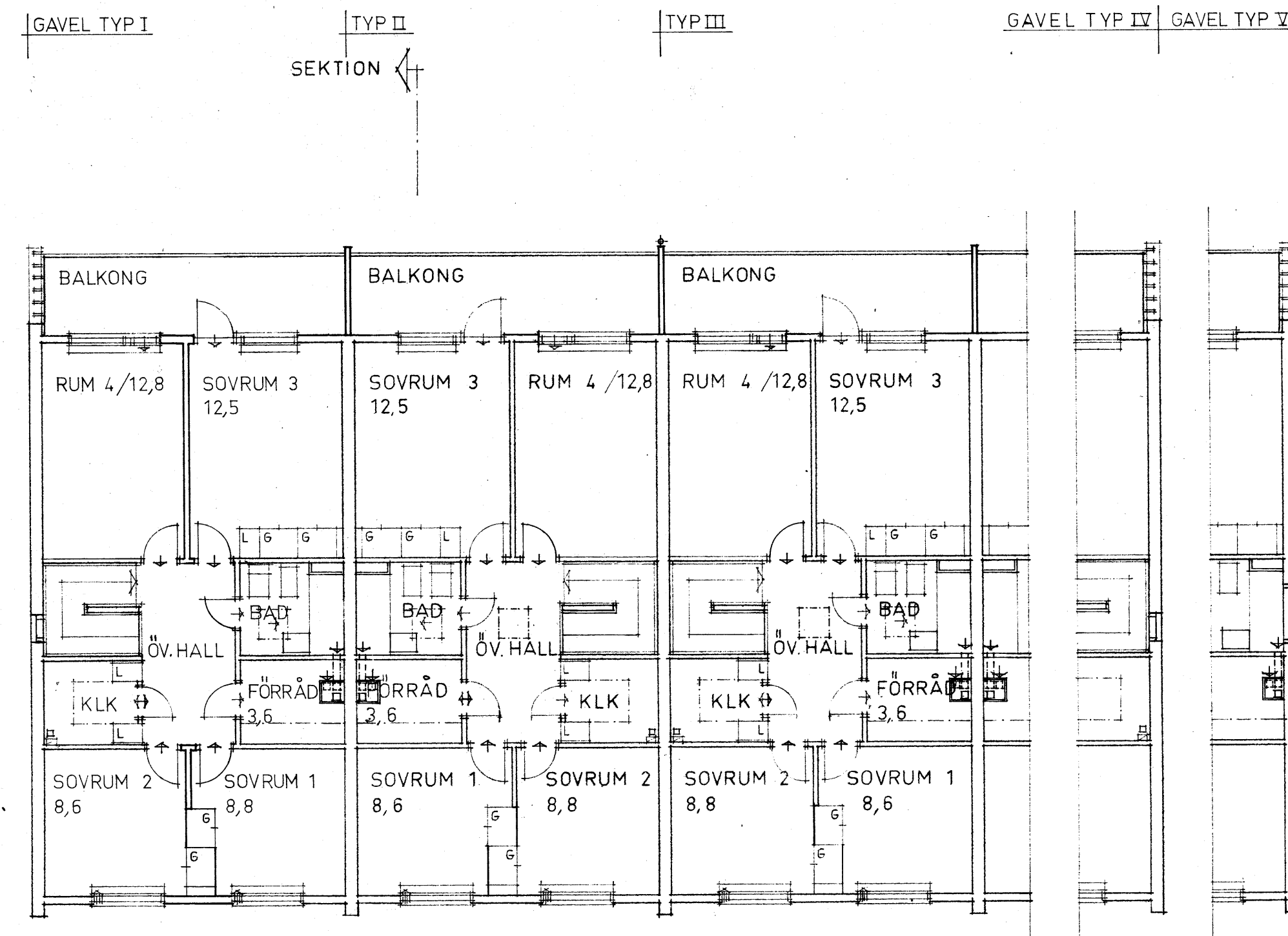
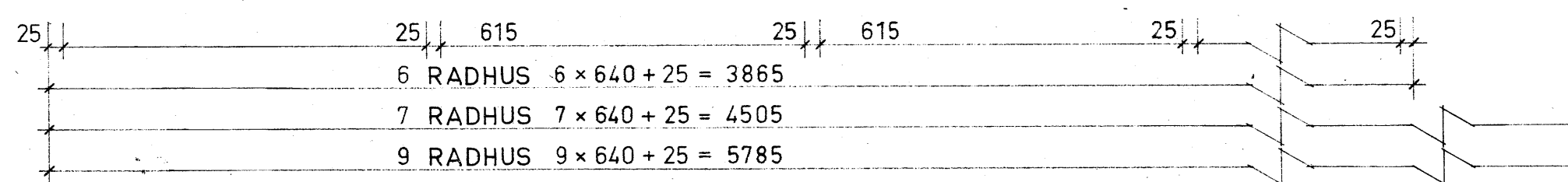


GAVELFASAD V



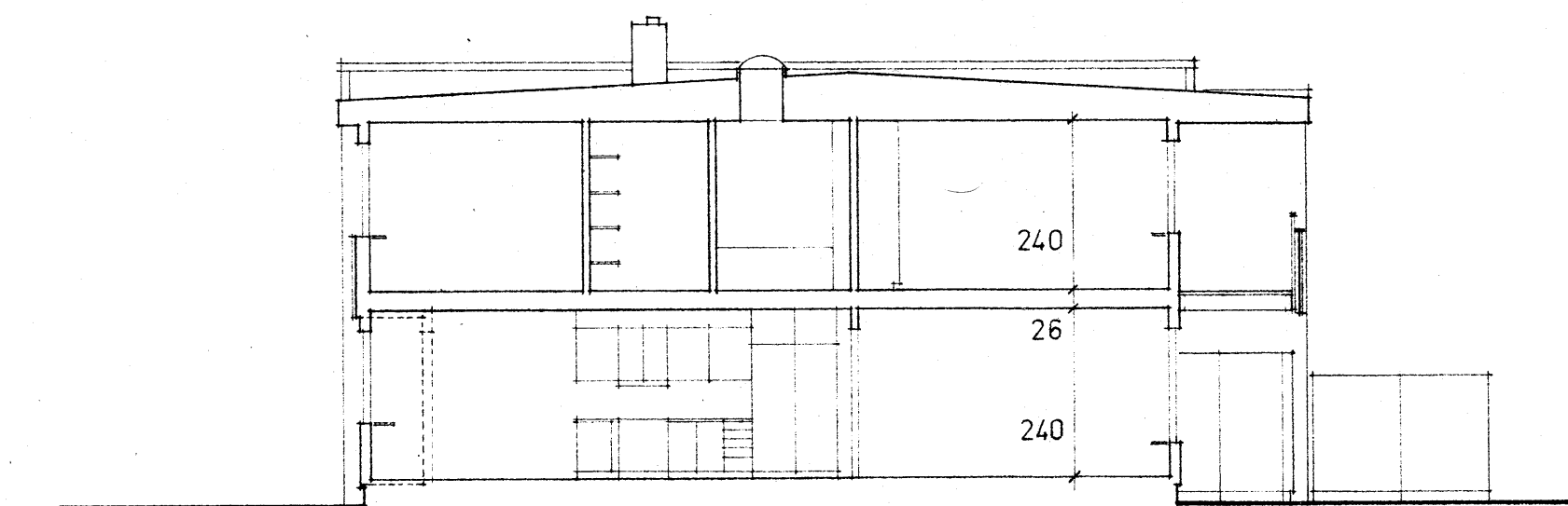
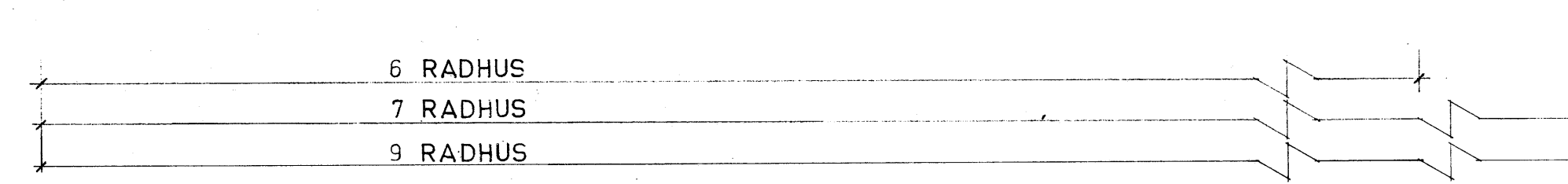
ENTRÉPLAN

VTA INNFÖR YTTERVÄGGARNA: 66,3 M², MED ÖVERVÄN: 135,8 M²



PLAN I TR

VTA INNFÖR YTTERVÄGGARNA: 69,5 M²



SEKTION