

RACCORDI SPECIALI

SPECIAL CONNECTORS



ART.103



ART.104

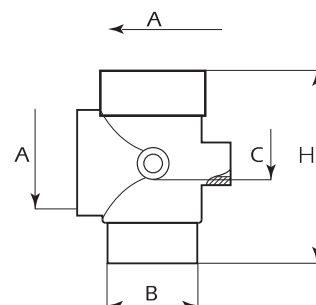


ART.105.03



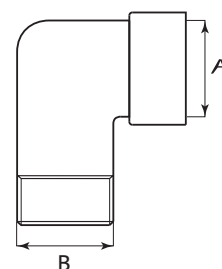
ART.105.00

TIPO TYPE	A	B	C	H	PESO WEIGHT
3 VIE	G1"	G1"	-	72	0,230 Kg
5 VIEN.	G1"	G1"	G1/4	72	0,230 Kg
5 VIE P.	G1"	G1"	G1/4	92	0,270 Kg
4 VIE	G1"	G1"	G1/4	78	0,270 Kg



ART.106

MODELLO	MISURE A/B - SIZES A/B										
ART.106	-	-	1/2	3/4	1"	1.1/4	1.1/2	2"	2.1/2	3"	4"



■ I raccordi, realizzati in ottone OT58 UNI 5705/65, sono stati appositamente studiati per il montaggio di piccole autoclavi, riducendo tempi ed accessori.

🇬🇧 These connectors, made of brass OT58 UNI 5705/65, have been developed especially for the assembly of small surge tanks, thereby reducing time and accessories.

■ DATI TECNICI

🇬🇧 TECHNICAL DATA

PRESSIONE MASSIMA D'ESERCIZIO PN	40 bar
DIAMETRO NOMINALE DN	vedere tabella
NATURA DEL FLUIDO	acqua, aria, alcali, idrocarburi, acidi, ecc.

MAXIMUM WORKING PRESSURE PN	40 bar
MAJOR DIAMETER MD	see table
TYPE OF FLUID	water, air, alkalis, hydrocarbons, acids, etc.