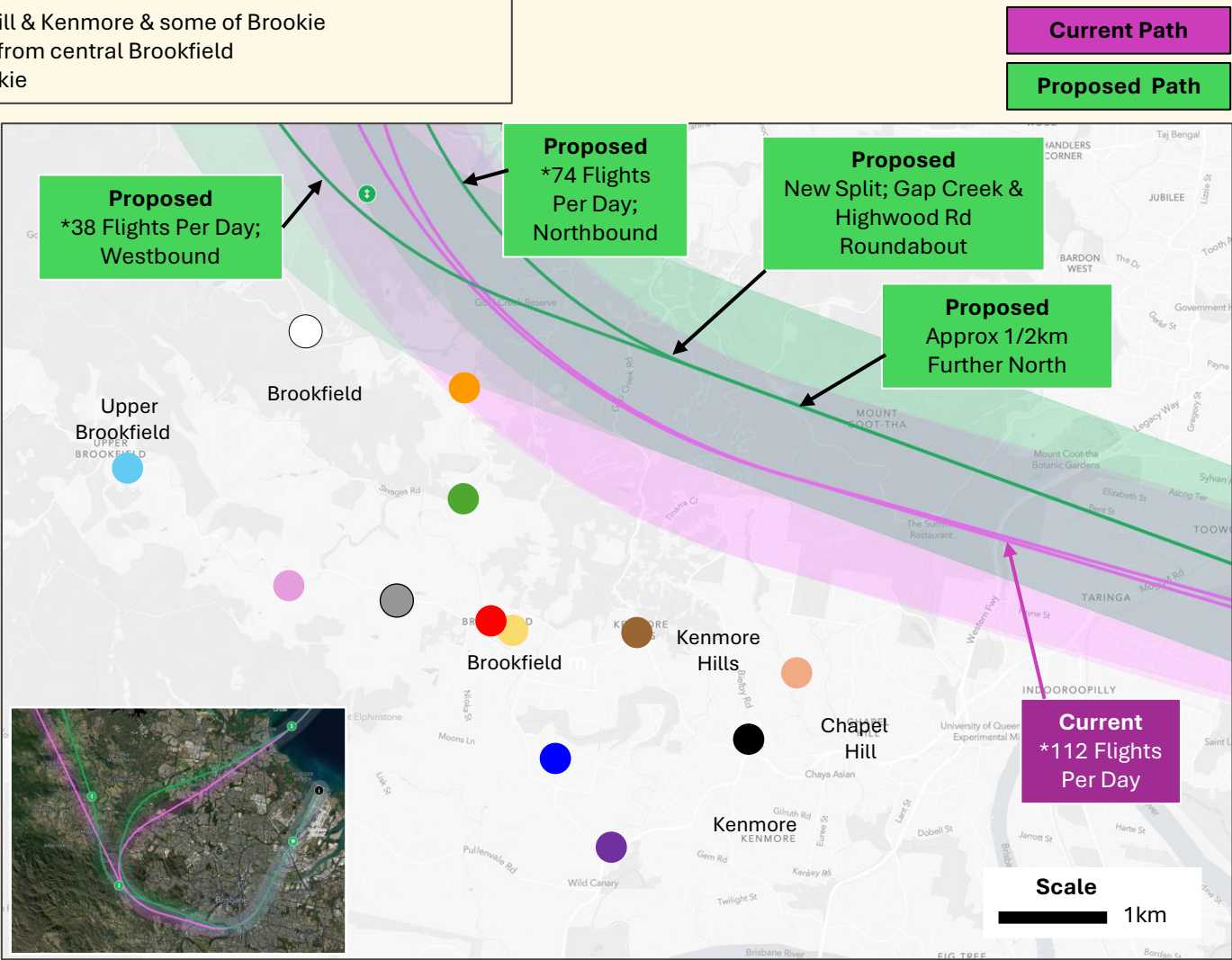


1.1 Departures Over Land To The North & West From The New Runway During Southerly Winds 6am-10pm & 10pm-6am

- Flight path is pushed further away from Chapel Hill & Kenmore & some of Brookie
- Path splits earlier; 74 flights approx ½ km further from central Brookfield
- 38 flights closer to Upper Brookie & western Brookie

- Brookfield Showgrounds
- Brookfield State School
- Upper Brookfield State School
- Cnr Haven & Upp Brookfield Rd
- Cnr Peronne Place & Upp Brookfield Rd
- Cnr Savages & Gold Creek Rds
- Cnr Gold Creek Rd & Jones Rd
- Cnr Hillbrook & Gold Creek Rds
- Cnr Gap Creek & Brookfield Rds.
- Huntington Estate
- Cnr Moggill & Rafting Ground Rds
- Kenmore Village
- Chapel Hill State School



*Up To This Number Of Flights Daily; The Flight Numbers Above Are Forecast To Grow By 78.4% by 2040.

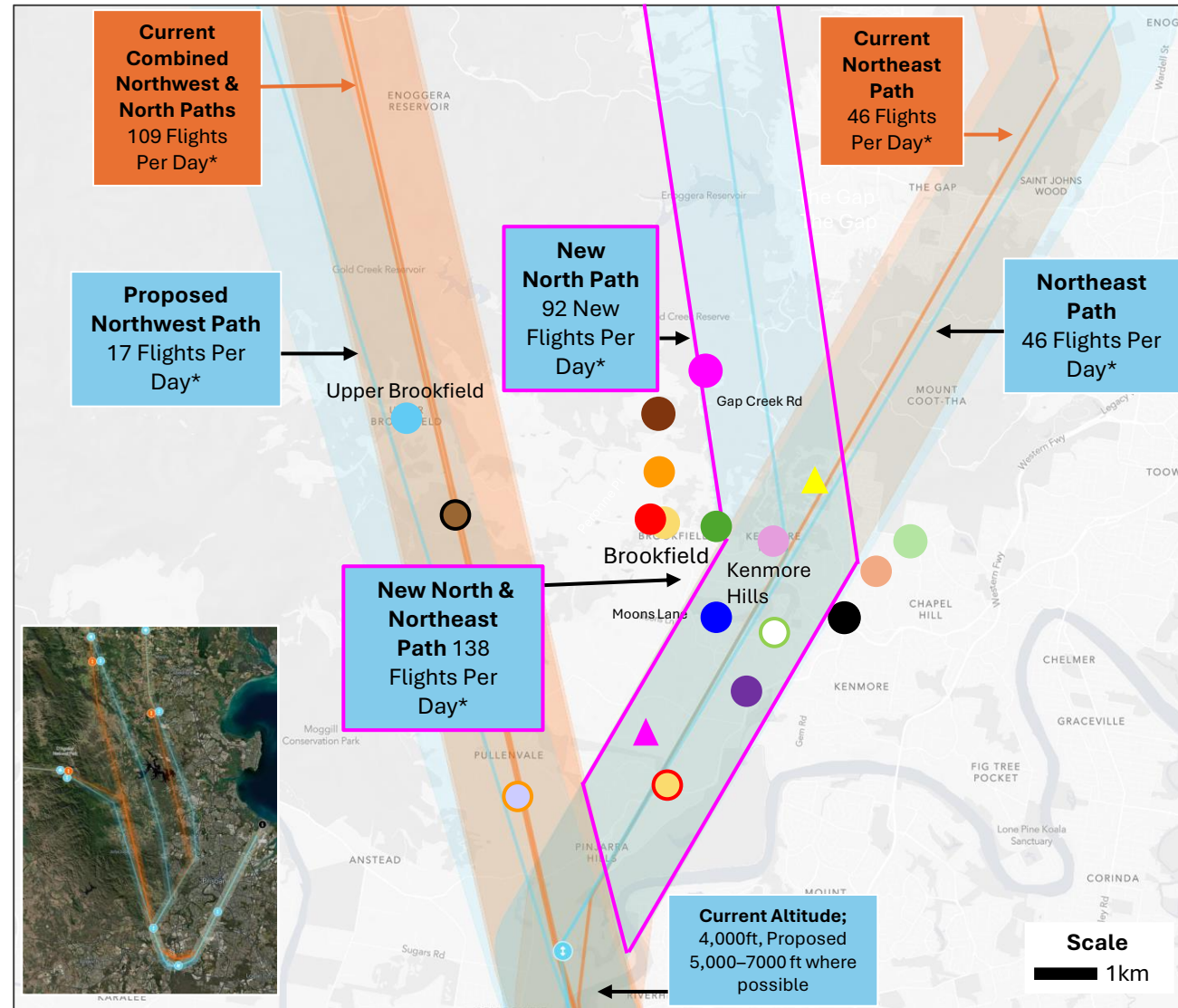
1.2 Arrivals Over Land From The North & West To The New Runway; Long Approach 6am-10pm & 10pm-6am

	Brookfield Showgrounds
	Brookfield State School
	Cnr Savages Rd & Gold Creek Rd
	Cnr Gold Creek & Jones Rd
	Cnr Hillbrook & Gold Creek Rd
	381 Boscombe Rd
	Cnr Deerhurst & Brookfield Rds
	Huntington Estate
	Kensington Estate
	Cnr Moggill & Rafting Ground Rds
	Upper Brookfield State School
	Haven Rd
	Cnr Gap Creek & Brookfield Rd
	Tinarra Crescent
	Kenmore Village
	Chapel Hill State School
	Cnr Fleming & Chapel Hill Rds
	Cnr Bainbridge Dr & Moggill Rd
	Airlie Rd
	Red Cedar Rd
	Huntington St

-New arrivals flight path added between existing paths (blue)
-Number of flights redistributed as indicated below

Current Path

Proposed Path



*Up To This Number Of Flights Daily; The Flight Numbers Above Are Forecast To Grow By 78.4% by 2040. Flight noise will carry up to 5km either side of the paths above.

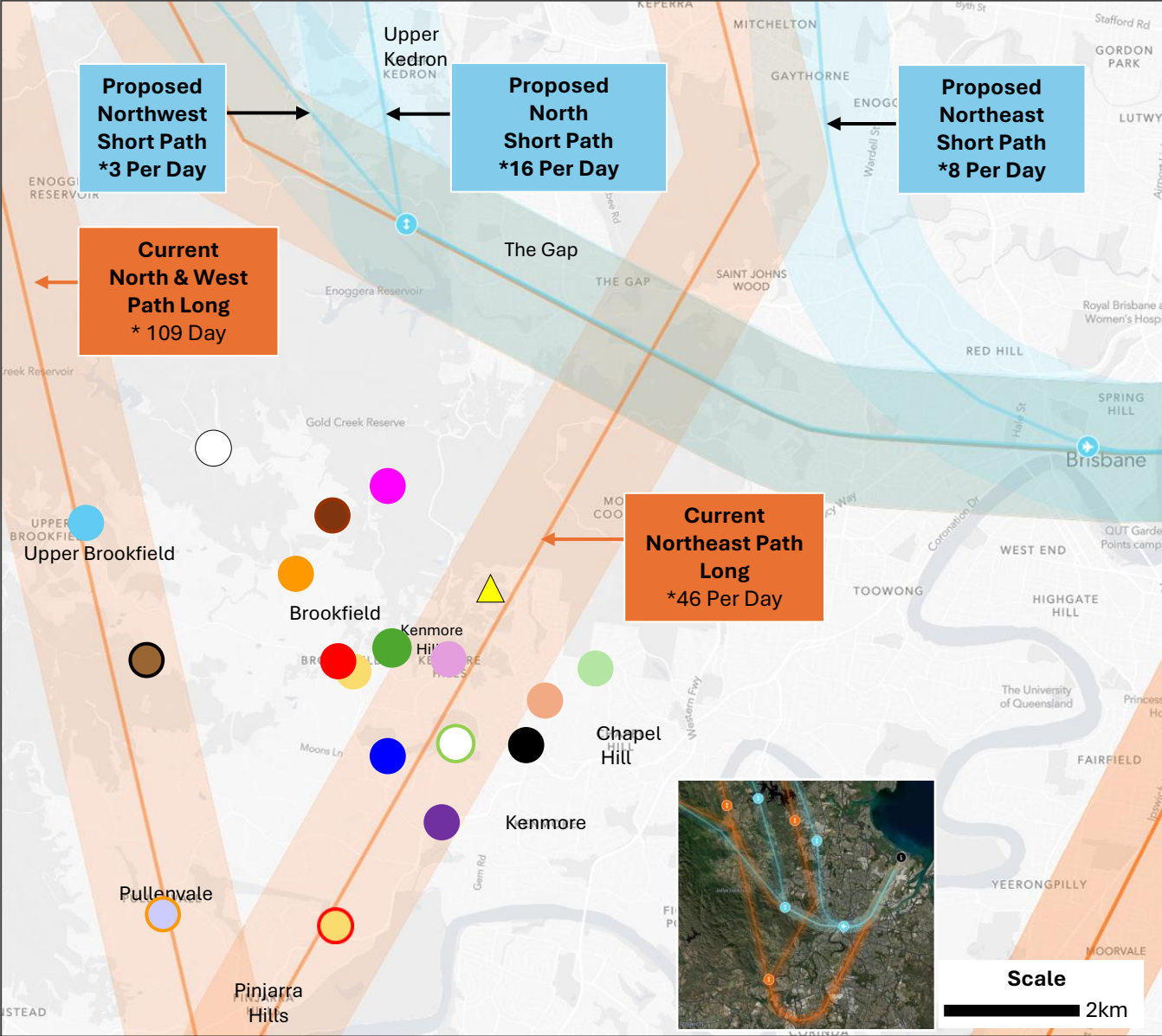
1.2 Arrivals Over Land From The North & West To The New Runway; Short Approach 6am-10pm Only

- Brookfield Showgrounds
- Brookfield State School
- Cnr Savages Rd & Gold Creek Rd
- Cnr Gold Creek & Jones Rd
- Cnr Hillbrook & Gold Creek Rd
- 381 Boscombe Rd
- Cnr Deerhurst & Brookfield Rds
- Huntington Estate
- Kensington Estate
- Cnr Moggill & Rafting Ground Rds
- Upper Brookfield State School
- Haven Rd
- Cnr Gap Creek & Brookfield Rd
- ▲ Tinarra Crescent
- Kenmore Village
- Chapel Hill State School
- Cnr Fleming & Chapel Hill Rds
- Cnr Bainbridge Dr & Moggill Rd
- Airlie Rd

*Up To This Number Per Day Currently; Flights Are Forecast To Grow By 78.4% by 2024

-New ‘short arrivals path’ added (blue)
 -Small no of flights diverted away from Brookie through the Gap

Current Path
 Proposed Path



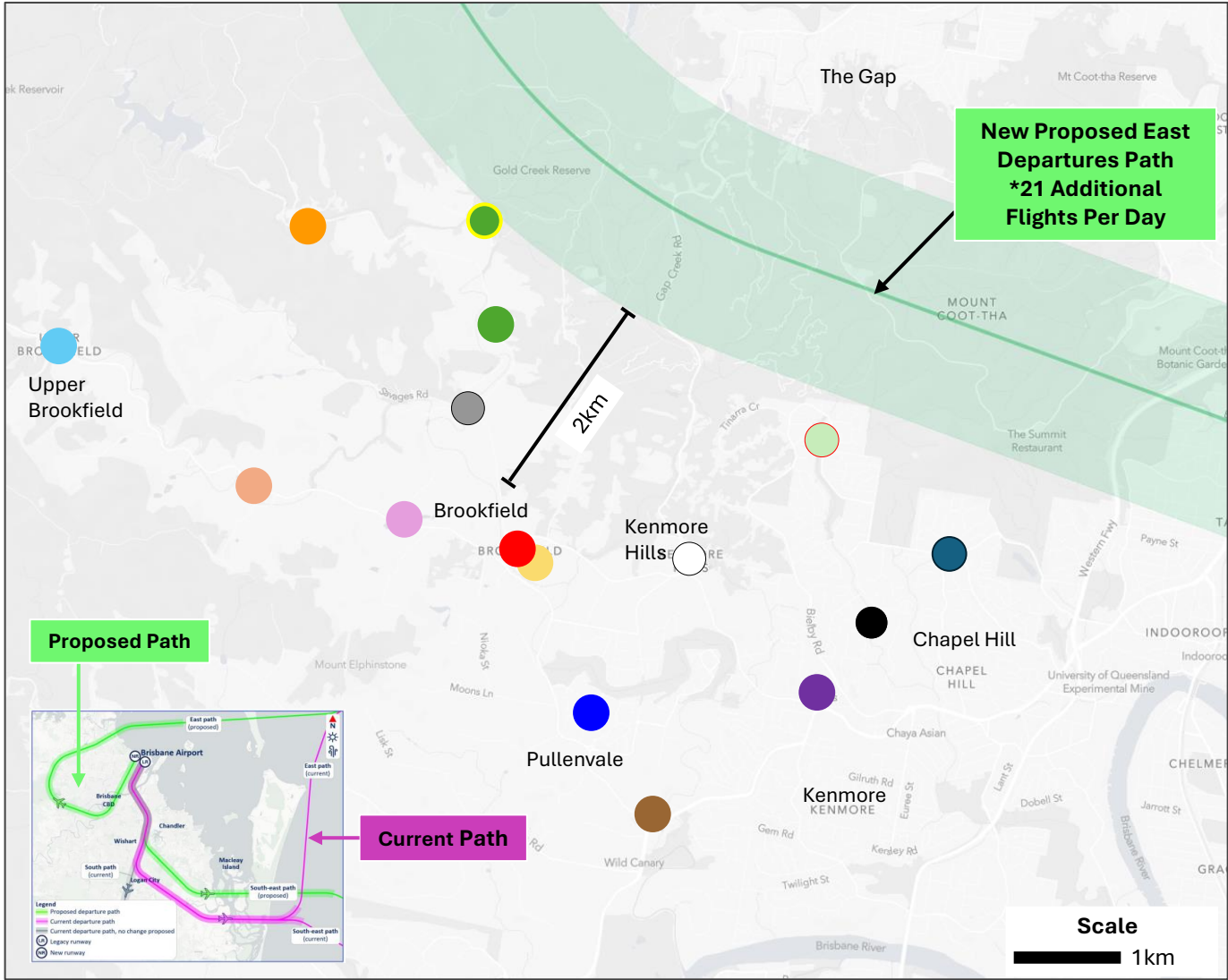
*Up To This Number Of Flights Daily; The Flight Numbers Above Are Forecast To Grow By 78.4% by 2040.

2.1 Departures Over Land
To The South & East (& West)
6am-10pm & 10pm-6am

- Brookfield Showgrounds
- Brookfield State School
- Upper Brookfield State School
- Cnr Haven & Upp Brookfield Rd
- Cnr Peronne Place & Upp Brookfield Rd
- Cnr Savages & Gold Creek Rds
- Cnr Gold Creek Rd & Jones Rd
- Jones Rd
- Cnr Hillbrook & Gold Creek Rds
- Cnr Gap Creek & Brookfield Rds.
- Cnr Moggill & Rafting Ground Rds
- Huntington Estate
- Kenmore Village
- Chapel Hill State School
- Greenford St Chapel Hill
- Cnr Fleming & Chapel Hill Rd

-Eastbound departures added to Brookie (aircraft fly overland & then turn towards the water)
-New path follows the existing & notorious departures path, adding additional load

Current Path
Proposed Path



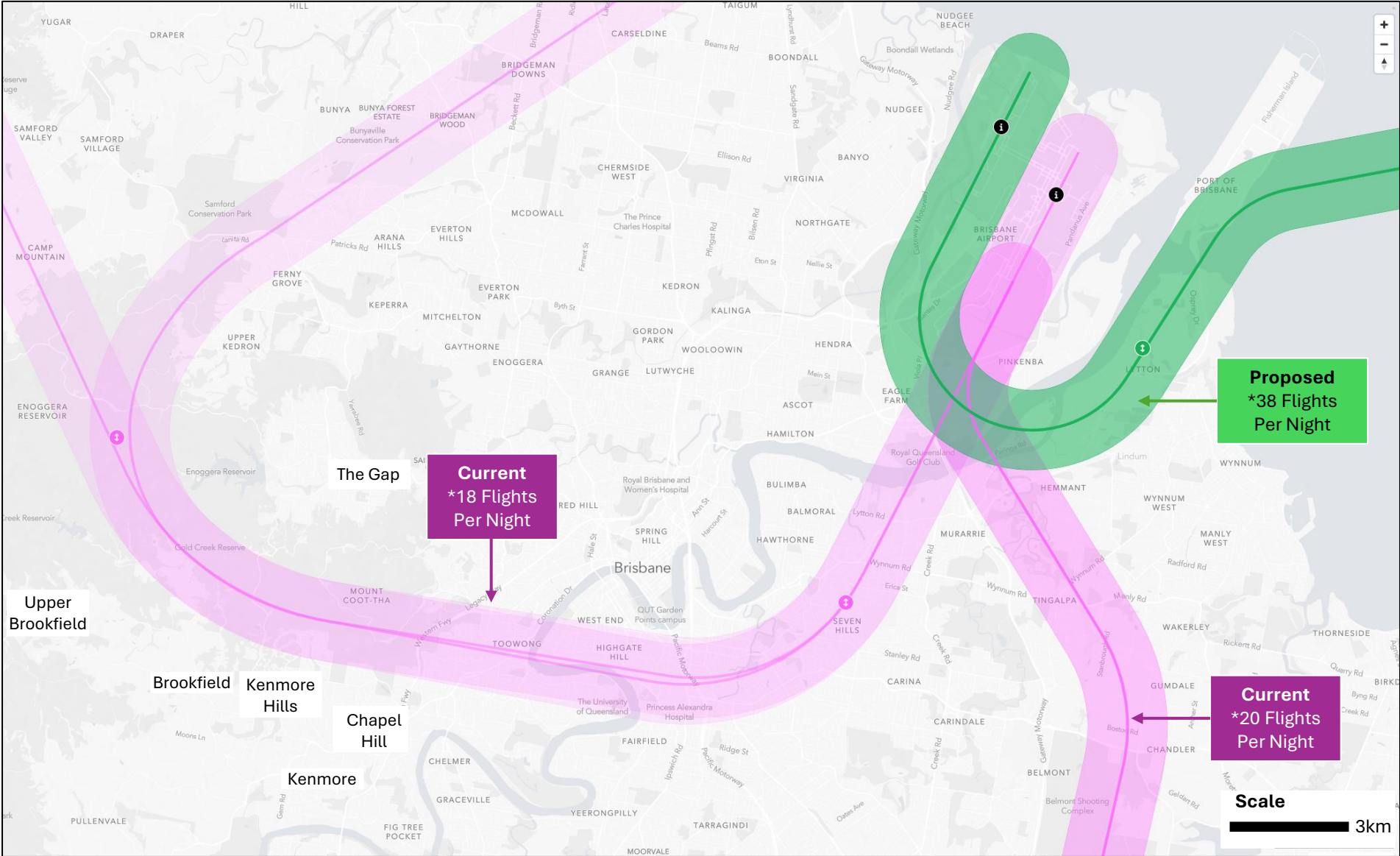
*Up To This Number Of Additional Flights Per Day; Flights Numbers Above Are Forecast To Grow By 78.4% by 2040.

4. Departures Over Land
At Night 10pm-6am

-Notorious existing departures path (pink) to be relocated (green) to fly over the water between 10pm & 6am (only) instead of over our community; Trial to take place in 2026

Current Path

Proposed Path



*Up To This Number Of Flights Between 10pm & 6am Nightly; All Flight Numbers Above Are Forecast To Grow By 78.4% by 2040