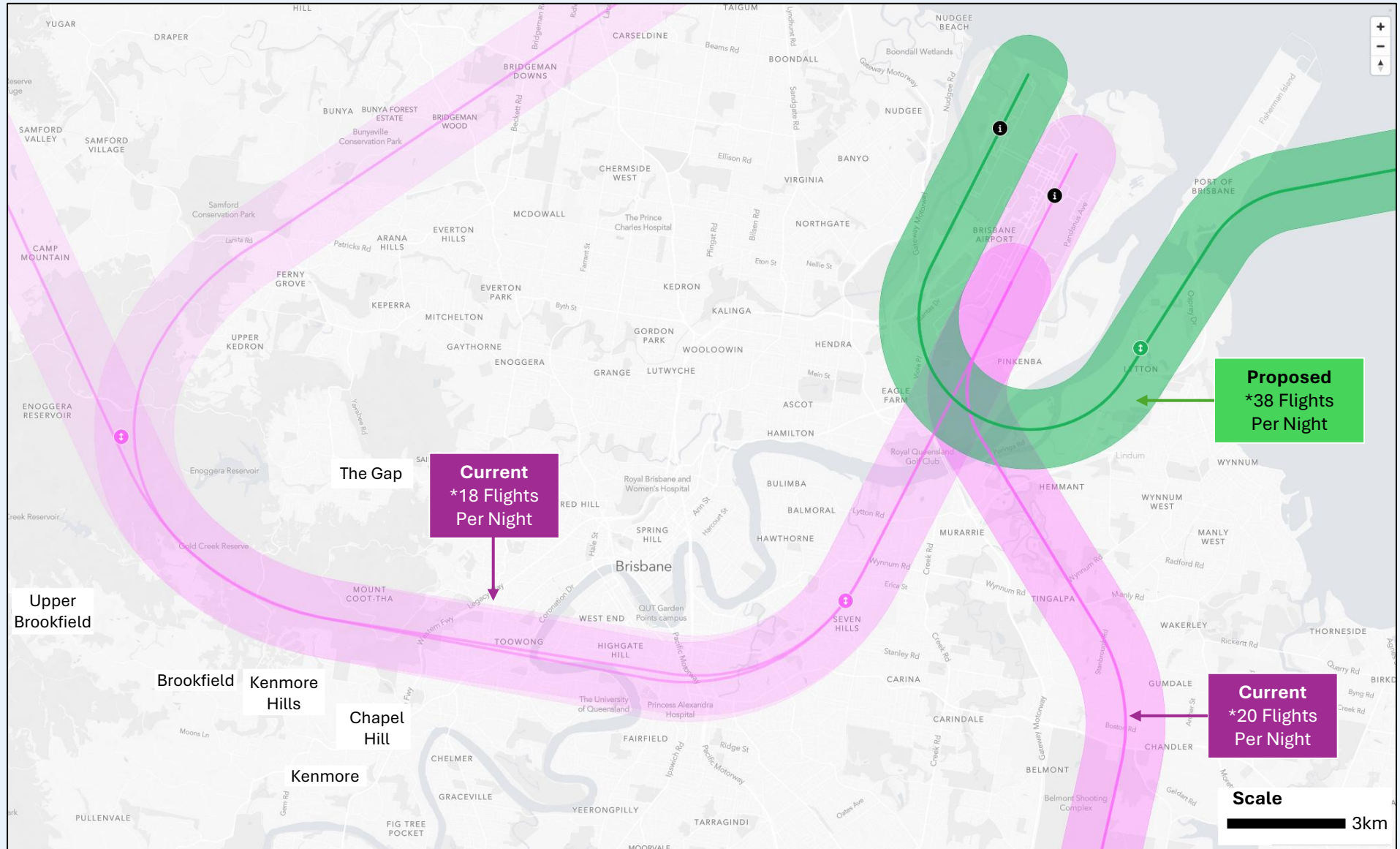


4. Departures Over Land At Night 10pm-6am

-Notorious existing departures path (pink) to be relocated (green) to fly over the water between 10pm & 6am (only) instead of over our community; Trial to take place in 2026

Current Path

Proposed Path



*Up To This Number Of Flights Between 10pm & 6am Nightly; All Flight Numbers Above Are Forecast To Grow By 78.4% by 2040