



## REACH IN REFRIGERATOR

### Z28R

Bottom Mounted / Solid Door



#### **i** TECHNICAL SPECIFICATIONS

Voltage/Frequency 220V/50Hz  
Refrigerant R290  
Interior Material Stainless Steel  
Exterior Material Stainless Steel  
Temperature Range °F 33 ~ 41°F  
Compressor Power (HP) 1/5  
Nema Config. NEMA5-15P



### PRODUCT FEATURES

- Reversible Doors
- The compressor is mounted in the bottom for better heat evaporation.
- Digital temperature controls with LED display for precise adjustment and automatic defrosting system.
- Temperatures in the cabinet range from 33 to 41 degrees Fahrenheit
- Self closing doors with stay open feature.
- R290 Natural Refrigerant promotes faster cool down and efficient energy consumption.
- Epoxy coated wire shelves.
- Stainless steel interior & exterior, sealed interior floors, and rounded cabinet corners for easy cleaning.
- High quality coated stainless adjustable shelves prevent peel and rust.
- Lifetime warranty on hinges.
- Adjustable front locking casters.



### HIGH QUALITY STAINLESS STEEL & ROBUST DESIGN



Los Angeles | San Francisco | Dallas  
Houston | Florida | Chicago | New Jersey

+1(708) 590-9543

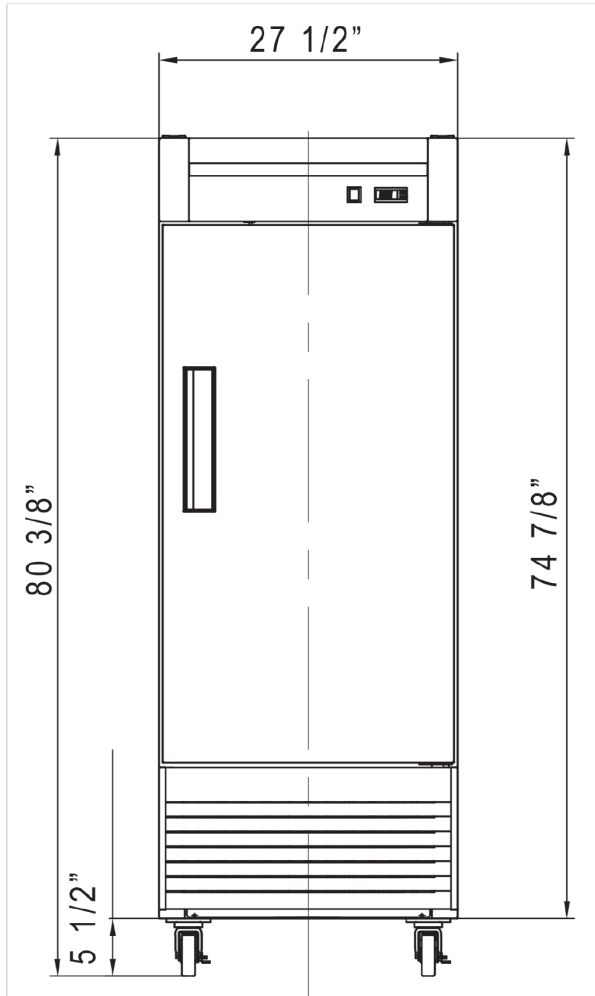
[info@zuilex.com](mailto:info@zuilex.com)

[www.zuilex.com](http://www.zuilex.com)

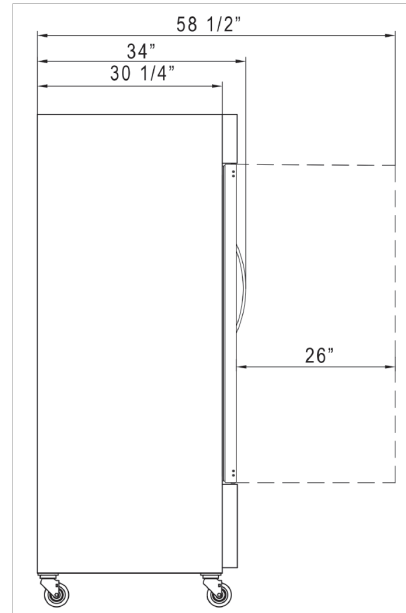
# DETAILS & SPECIFICATIONS

## Z28R

Front View



Side View



Rated Voltage	220V
Rated Frequency	50Hz
Total Input Power	260W
Total Current	3.1A
Total Capacity	17.79 cu ft
Climatic Category	4-5
Protection Type	I
Design Pressure High Side	300 PSIG
Design Pressure Low Side	150 PSIG
Insulation Blowing Gas	C-Pentane
Refrigerant	R290/3.17 oz

MODEL	EXTERNAL DIMENSION WXDXH (INCHES)	PACKAGING DIMENSION WXDXH (INCHES)	PRODUCT NET WEIGHT	# OF SHELVES	40HQ CONTAINER CERT.
Z28R	27 1/2 x 34 x 80 3/8	29 1/8 x 35 x 82 3/8	286 lbs	4	39



Los Angeles | San Francisco | Dallas  
Houston | Florida | Chicago | New Jersey

+1(708) 590-9543

info@zuilex.com

www.zuilex.com