

Configuration of VESTA charcoal closed grill:

- Built-in flame arrestor
- Protection screen – protect the wall from overheating
- Fire grate
- Air draft regulator (top and bottom)
- Ash box
- Thermometer
- S/s roasting rack (bars)
- Tongs for products
- Coal rake



Technical characteristics

	VESTA 25	VESTA 45	VESTA 50	VESTA 38
Number of diners	70	100	150	40
Production per hour, kg	60	90	110	25
Grill rack dimensions, mm	545x480	840x480	840x740	616x370
Charcoal daily consumption, kg	10-12	12-16	16-20	6-8
Maximum coal load, kg	8	10	14	5
Fire up time, min	30	35	40	30
Exhaust rate, m³/h	2800	3200	3200	2500
Net weight, kg	140	177	231	90
Fully optioned model weight, kg	190	236	300	98

Recommendations for installing:

When installing indoors, the grill requires the connection to an individual exhaust system or installation of the spark arrestor with hydro filter.

Grill can run long time on a single coal batch; it depends on chef's workload and his experience.



Model Mx*
VESTA Charcoal Oven



	Dimensions Width x Depth x Height, cm
VESTA M38 **40	71 x 56 x 47
VESTA M25 **70	64 x 69 x 79
VESTA M45 **100	108 x 65 x 79
VESTA M50 **150	108 x 91 x 79

Model MxS
VESTA Charcoal Oven with
- Stand
- Heat Cupboard



	Dimensions Width x Depth x Height, cm
VESTA M38 **40	72 x 71 x 164
VESTA M25 **70	78 x 65 x 158
VESTA M45 **100	108 x 65 x 158
VESTA M50 **150	108 x 91 x 158

Model MxSD
VESTA Charcoal Oven with
- Stand
- Heat Cupboard
- Dry Spar Arrestor



	Dimensions Width x Depth x Height, cm
VESTA M38 **40	72 x 71 x 164
VESTA M25 **70	78 x 65 x 158
VESTA M45 **100	108 x 65 x 197
VESTA M50 **150	108 x 91 x 197

Model MxSS
VESTA Charcoal
Oven with
- Stand
- Heat Cupboard
- Dry Spar Arrestor
- Spark Arrestor with
Water Curtain



	Dimensions Width x Depth x Height, cm
VESTA M25 **70	78 x 65 x 250
VESTA M45 **100	108 x 65 x 250
VESTA M50 **150	108 x 91 x 250

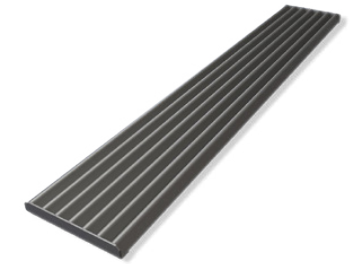
Accessories:



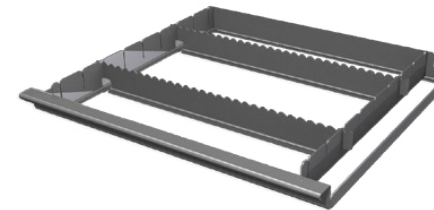
- Grill (rods / plates)



- Coal Starter



- Stand for VESTA oven with hot cabinet



- Barbecue grill



- Fire-grate



- Protective screen (stainless steel)

- Brush
- Thermometer
- Wheels

- Suspension frame for the spark-arrestor pipe
- Grid for hot cabinet

* Number of diner