



**PREMIUM  
WARRANTY**

## REACH IN REFRIGERATOR

Z55AR  
Top Mounted / 2-Solid Door



### **i** TECHNICAL SPECIFICATIONS

Voltage/Frequency 220V/50Hz  
Refrigerant R290  
Type of Defrost Automatic  
Interior Material Stainless Steel  
Exterior Material Stainless Steel  
Temperature Range °F 33 ~ 41°F  
Compressor Power (HP) 1/2+  
Nema Config. NEMA5-15P



### PRODUCT FEATURES

-  The compressor is mounted in the top and placed in the coolest possible area; this makes it easily accessible for servicing.
-  Digital temperature controls with LED display for precise adjustment and automatic defrosting system.
-  Temperatures in the cabinet range from 33 to 41 degrees Fahrenheit
-  Self closing doors with stay open feature.
-  R290 Natural Refrigerant promotes faster cool down and efficient energy consumption.
-  Epoxy coated wire shelves.
-  Stainless steel interior & exterior, sealed interior floors, and rounded cabinet corners for easy cleaning.
-  High quality coated stainless adjustable shelves prevent peel and rust.
-  Lifetime warranty on hinges.
-  Adjustable front locking casters.



### HIGH QUALITY STAINLESS STEEL & ROBUST DESIGN



Los Angeles | San Francisco | Dallas  
Houston | Florida | Chicago | New Jersey

+1(708) 590-9543

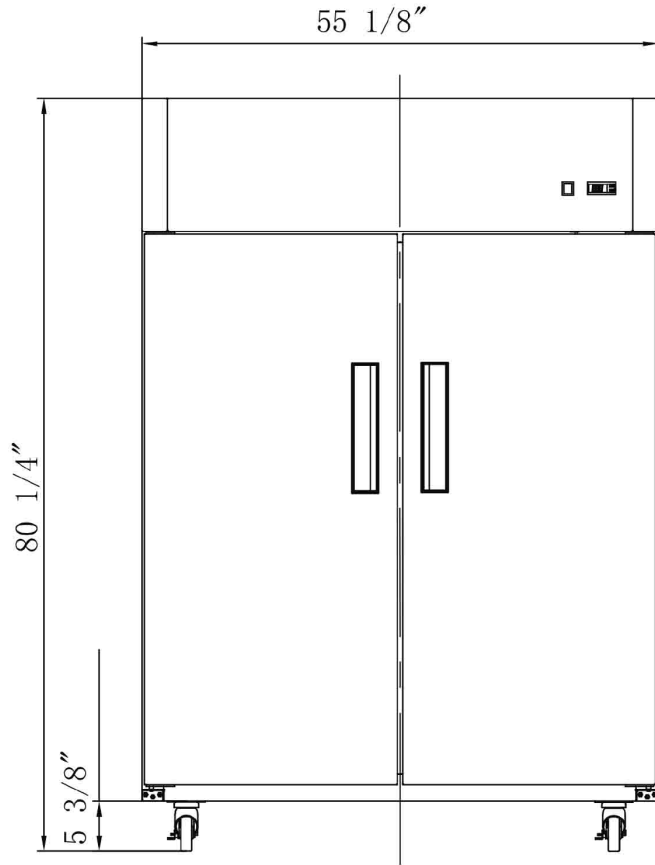
info@zuilex.com

www.zuilex.com

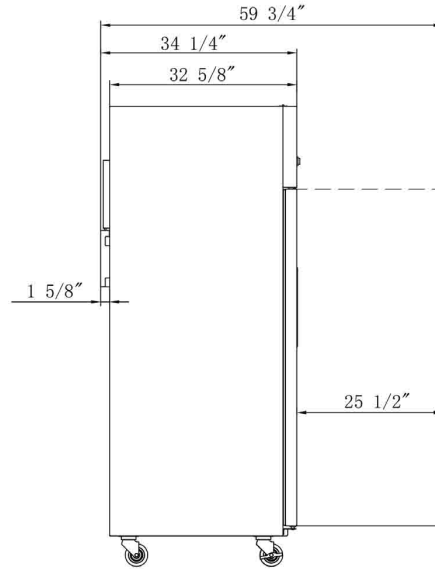
# DETAILS & SPECIFICATIONS

## Z55AR

Front View



Side View



|                           |              |
|---------------------------|--------------|
| Rated Voltage             | 220V         |
| Rated Frequency           | 50Hz         |
| Total Input Power         | 730W         |
| Total Current             | 8.6A         |
| Total Capacity            | 41.73 cu ft  |
| Climatic Category         | 4-5          |
| Protection Type           | I            |
| Design Pressure High Side | 300 PSIG     |
| Design Pressure Low Side  | 150 PSIG     |
| Insulation Blowing Gas    | C-Pentane    |
| Refrigerant               | R290/4.58 oz |

| MODEL | EXTERNAL DIMENSION<br>WXDXH (INCHES) | PACKAGING DIMENSION<br>WXDXH (INCHES) | PRODUCT NET<br>WEIGHT | # OF<br>SHELVES | 40HQ<br>CONTAINER CERT. |
|-------|--------------------------------------|---------------------------------------|-----------------------|-----------------|-------------------------|
| Z55AR | 55 1/8 x 34 1/4 x 80 1/4             | 57 1/8 x 35 1/4 x 82 1/4              | 463 lbs               | 8               | 16                      |



Los Angeles | San Francisco | Dallas  
Houston | Florida | Chicago | New Jersey

+1(708) 590-9543

info@zuilex.com

www.zuilex.com