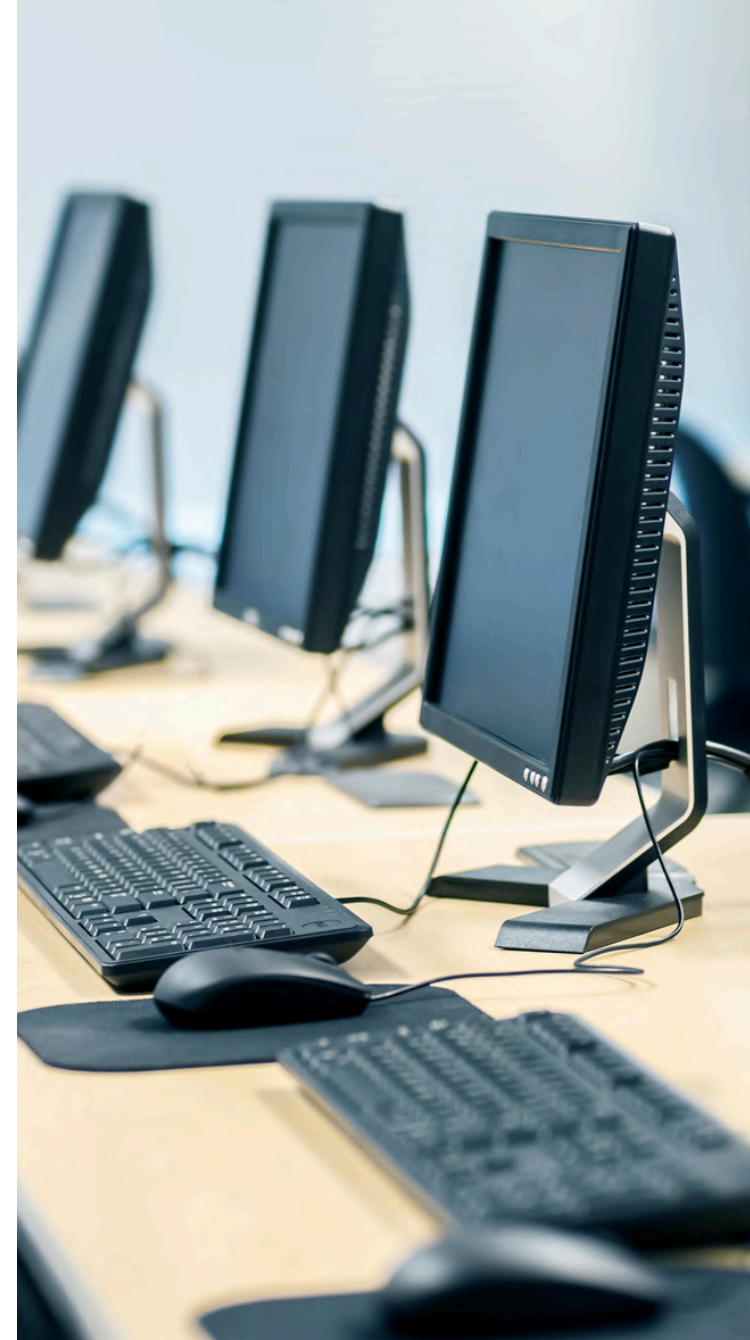


# K2AL Systems

Designed for Everyday Ease





# K2 AL

## Everyday Ease



- Small enough to fit almost anywhere
- Powerful enough to make it a great choice for everyday light home office use or for companies looking for a full Windows machine
- Offers plenty of connectivity options
- VESA mount compatibility make them ideal for clutter-free setups in home offices or business environments
- Equipped with TPM 2.0 for enhanced system security and reliable data protection



**Dual Display**



**WIFI 6**



**1000M LAN**



**Bluetooth 5.2**



**Windows 11 Pro**



**256 GB**



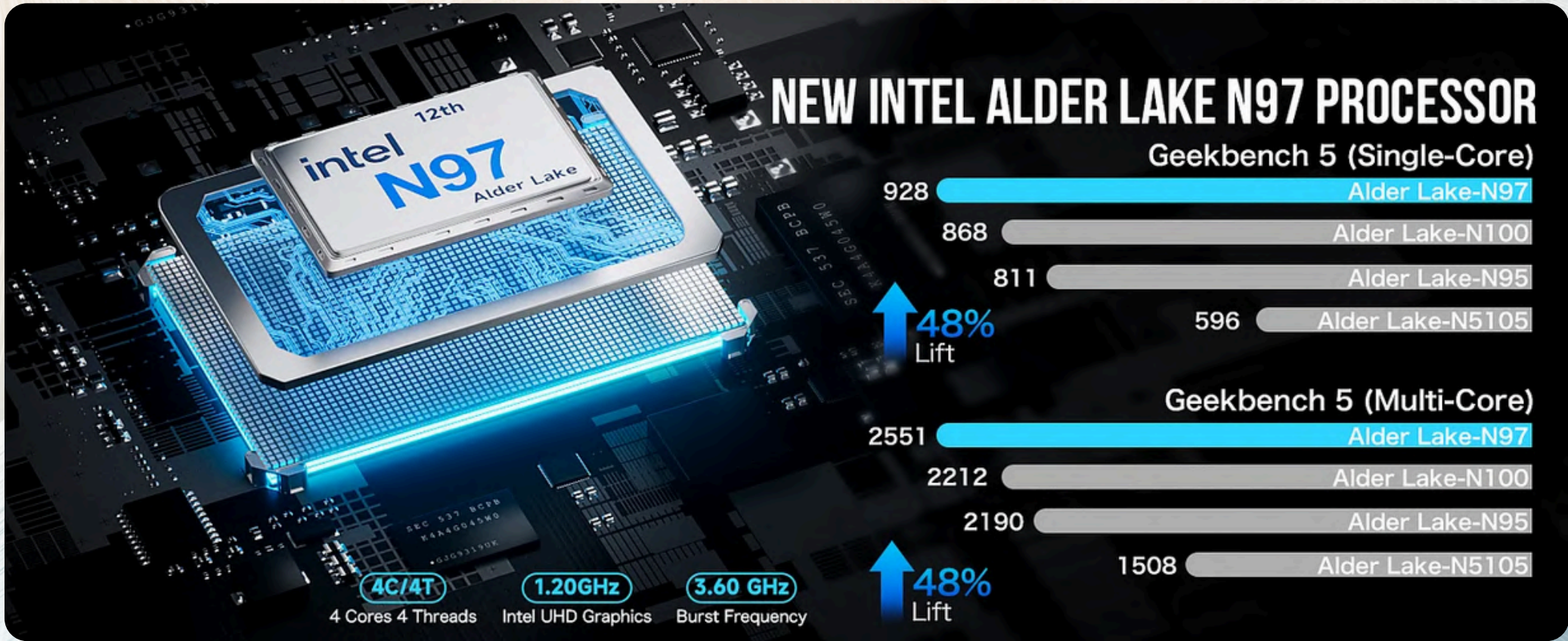
**DDR5 12GB**

Tiny, Fast, Money-wise. Perfect for Plex server, Kodi, Routers etc. Pocket-sized. Lower power consumption.



# K2 AL

## Everyday Ease



#### Processor

Intel N97, 4C/4T, 7nm  
Max Turbo Frequency 3.6GHz  
6 MB L3 Cache  
TDP 12W



#### GPU

Intel® UHD Graphics (1.20 GHz)  
24 execution units



#### RAM

12GB on board LPDDR5 4800 MT/s



#### Storage

256GB, M.2 2242 SATA  
(Max Support up to 2TB)



Micro SD slot x 1  
(Max 128GB)



#### Power Adapter

Type-C 12V 3A



#### VESA Bracket (Optional)

Yes



#### Certificates

CE / FCC / ROHS



#### Warranty

12 Months



#### OS

Supports Window 11 Pro & Linux



#### Display Ports

HDMI (4K@60Hz) x 2



#### USB

USB3.2 (Gen1 5Gbps) x 3  
Type C x 1



#### Audio

3.5 mm headphone jack x 1

#### Network Connectivity



Ethernet port RJ-45 x 1



BT 4.2 / WiFi 5



#### Product Size

72x72x44.5 mm



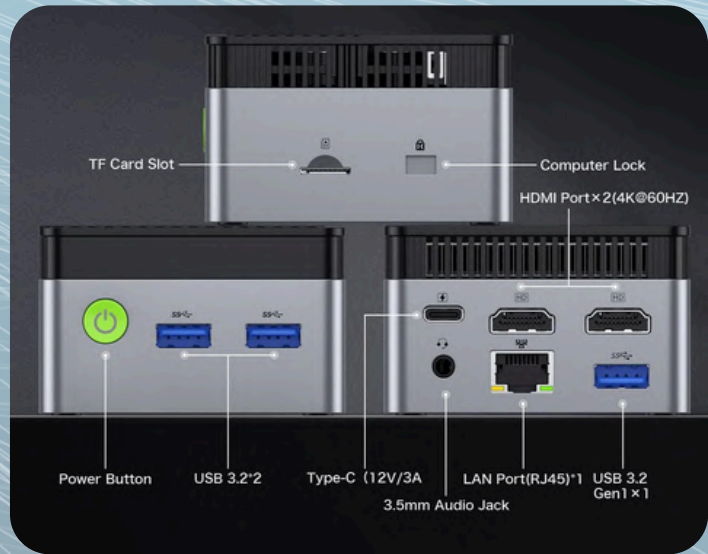
#### Product Weight

164g



#### Packing Content

Mini pc x 1  
Power adapter x 1  
User manual x 1  
Warranty card x 1





# K2 AL

Everyday Ease

## STRONG LAN & WIRELESS NETWORK SUPPORT



Built-in  
Dual Band WiFi



Compatible with  
RJ45 Giga LAN  
10/100/1000Mbps



Support  
Bluetooth 4.2





# K2 AL

Everyday Ease

## DUAL HDMI 4K DISPLAY





# K2 AL

Everyday Ease

## RICH INTERFACE

For Business, Office, Gaming, Home





# Use Cases



## **Business and Office**

Ideal for businesses looking for cost-effective solutions in large workspaces or point-of-sale setups



## **Industrial Applications**

Ruggedized features for industrial use, IoT applications, Digital Signage and Interactive Kiosks

## **Education Space**

Compact & cost-effective solutions tailored to enhance digital education experiences



# Business & Home

**Characteristics:** Require affordable, space-efficient computing solutions for workspaces.

**Needs:** Reliable devices for everyday computing tasks, compact design to save space, good cost-effectiveness.

## Buy it if...

### **You need a compact and affordable PC**

Its small size and low price make it perfect for tight spaces and budget-conscious buyers.

### **You require a machine for light office tasks**

It handles word processing, spreadsheets, and internet browsing efficiently.





# Industrial Applications



**Characteristics:** Retail businesses needing devices to support digital signage and in-store displays.

**Needs:** Mini PCs with reliable processing power, compact form, and energy efficiency.

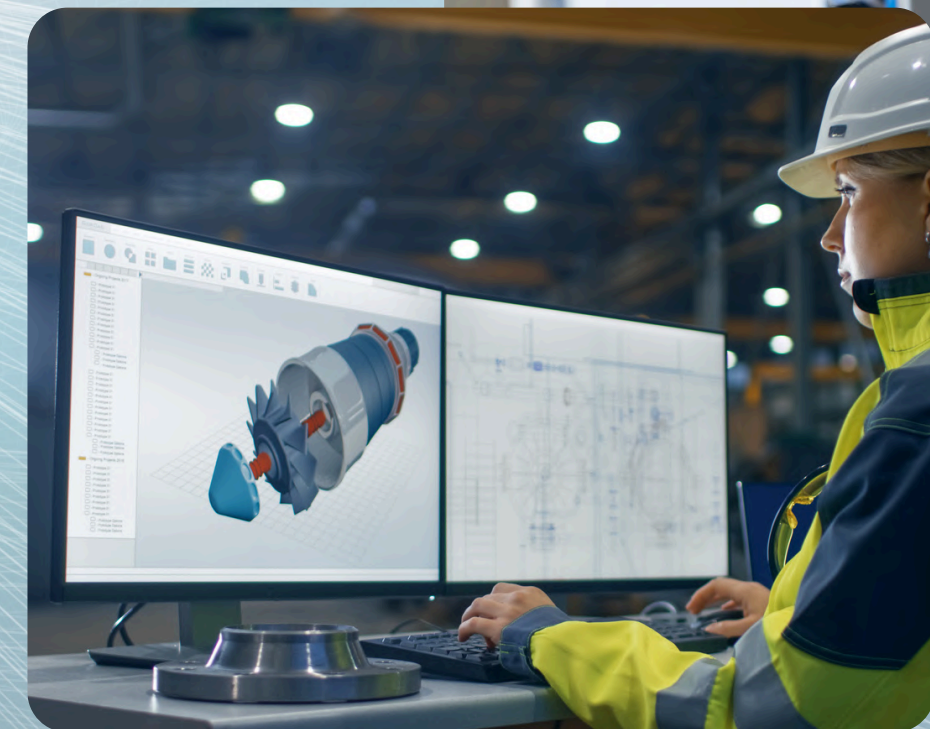
Buy it if...

## **You need a compact and affordable PC**

Its small size and low price make it perfect for tight spaces and budget-conscious buyers.

## **You require ease of Installation & 24/7 operation**

Ease of installation, and power efficiency for 24/7 operation.





# Education Space

**Characteristics:** Educational institutions seek devices with easy setup and cost-effective solutions to enable virtual learning, multimedia content delivery, and interactive classroom experiences

**Needs:** Mini PCs offering a compact design, easy & fast deployment, minimizing operational complexity

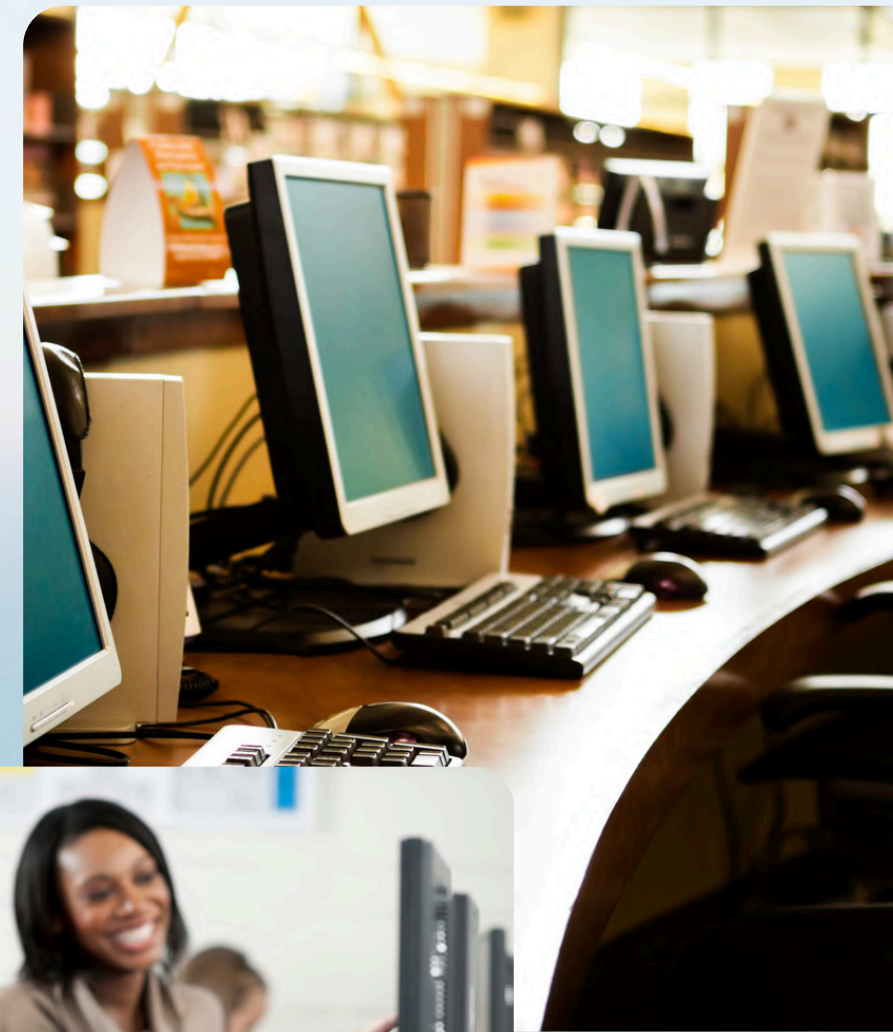
## Buy it if...

### **You need a compact and affordable PC**

Its small size and low price make it perfect for tight spaces and budget-conscious buyers.

### **You require a machine for light computing tasks**

It handles word processing, spreadsheets, and internet browsing efficiently.







ISO 9001:2015

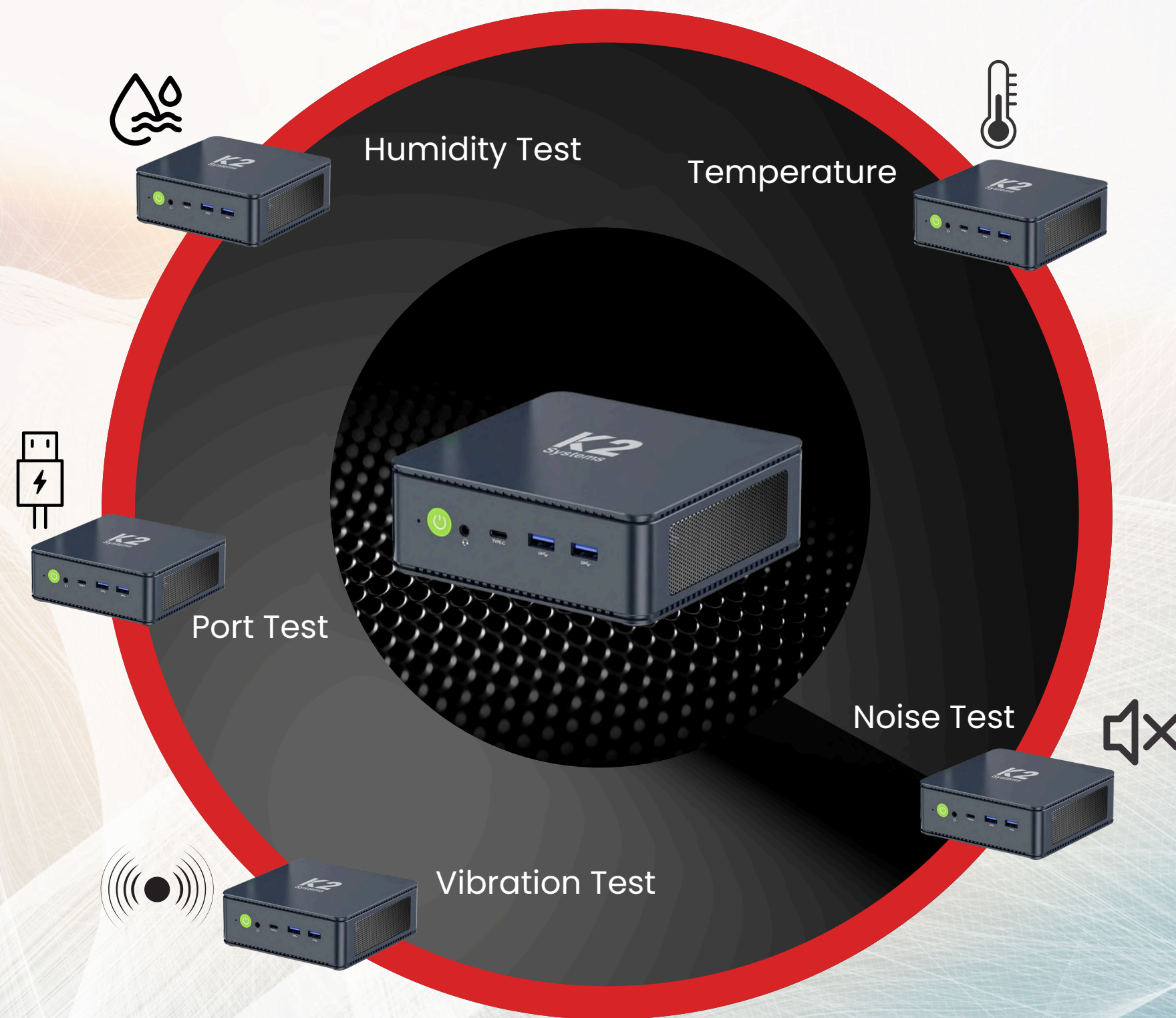


ISO 13485



CMMI Level 3





**Multiple Tests  
& Strict Quality Control**





Rigorously Tested & Benchmarked  
22-Point Test Report

On-Call Tech Support

Low Total Cost of  
Ownership

Enhanced Security

Get 100% Genuine Parts

## Why Choose K2 Systems?

Comprehensive warranty





# Product Range



intel

## K2 AL

Everyday Ease

Tiny, Fast, Money-wise & Low power consumption



intel

## K2 C5

Professional Grade Performance

Balances everyday efficiency with performance & upgrade-friendly package



AMD

## K2 R5

Extreme Performance, Stunning Visuals

Combines powerful performance & enhanced graphics capabilities



**100+**

active projects across the globe

**20**

years and counting

- No of business verticals : 6+
- Operating Base: India, UK, USA
- No of manufacturing plants : 1
- In-house Design & Manufacturing Capability
- Part of Make-In-India initiative

**K2 Systems** delivers cutting-edge single-board computing devices designed for multifunctional and multipurpose applications, empowering seamless integration across diverse industries.

**Partners**

intel. AMD arm



**System Level Solutions (SLS)** is a leading developer of embedded systems solutions, focused on a wide range of energy-efficient, powerful and flexible products. Our innovative compact embedded solutions offer a variety of platforms including SOMs (System-on-Module), SBCs (Single Board Computer), Embedded computers, and All in One Panel.



# Our Clients

We work with Fortune 500+ companies across the globe



Australia



Austria



Brazil



Canada



China



Finland



Germany



Hongkong



India



Israel



Japan



Singapore



South Africa



Spain



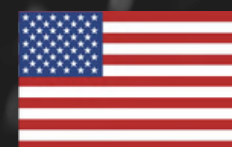
Sweden



Thailand



United Kingdom



United States of America



# Looking for a custom quotation ?

[sales@slscorp.com](mailto:sales@slscorp.com)  
+91 9898042339



**INDIA**  
32, D4, PHASE 1, GIDC ESTATE  
V.U. NAGAR, GUJARAT 388 121, INDIA



**USA**  
511 N. WASHINGTON AVENUE,  
MARSHALL, TEXAS 75670



**UK**  
20 MORTLAKE,  
20 MORTLAKE HIGH STREET,  
LONDON, SW14 8JN